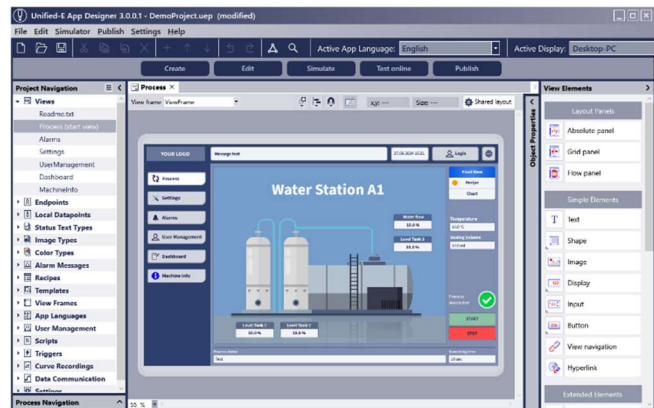


# Unified-E Basic License

The Unified-E Basic License is the ideal gateway solution for plants with multiple operator devices, offered at a fixed price. It enables secure and reliable communication between operator devices and the gateway server exclusively within the local network - completely independent of an internet connection.

The Basic License is perfect for applications such as operating multiple devices simultaneously or monitoring plants locally via smartphones or tablets in close proximity. With its universal recipe management, the license supports the creation of operator interfaces for FDA-compliant machines (FDA 21 CFR Part 11).



All essential applications—Unified-E App Designer, Unified-E App Manager, and Unified-E App Client—are included in the license and can be used at no additional cost. Operator apps are created in the Unified-E App Designer, installed on the gateway PC with the Unified-E App Manager, and accessed by operator devices registered with the App Manager. This setup ensures a centralized and secure communication infrastructure between operator devices and controllers.

The license is activated for a single gateway PC, with pricing based on the maximum number of registered operator devices. Designed specifically for local networks, the Basic License provides an efficient solution for plants without internet access.

## Specification

<b>Product Name</b>	<b>Unified-E Basic License</b>
<b>Product ID</b>	UE-GBL-02-XXX Article No.: 10202XXX
<b>Number of devices</b>	XXX (License parameter, integrated into product ID and article number)
<b>License Type</b>	One-time payment, license for one gateway PC and a specified number of operator devices
<b>Software Scope</b>	Unified-E App Designer, Unified-E App Manager, and Unified-E App Client included during usage period (hardware-bound license)
<b>Validity Period</b>	Linked to the lifetime of the gateway PC, transferable once within the first 5 years
<b>Activation Deadline</b>	License must be activated within 5 years of purchase
<b>Supported Platforms</b>	Unified-E App Client (Unified-E App): iOS 12 or later, Android 6.0 or later, Windows 10 or later Unified-E App Designer: Windows 10 (or later) Unified-E App Manager: Windows 10 (or later)
<b>System Requirements</b>	System requirements depend on the complexity of the configuration
<b>Included Features</b>	See <a href="http://www.unified-e.com">www.unified-e.com</a> , all Unified-E App Designer features available
<b>Software Updates</b>	Software updates are included for the entire usage period
<b>Software Download</b>	<a href="https://unified-e.com/de/downloads.html">https://unified-e.com/de/downloads.html</a>
<b>Trial Option</b>	Free trial period: Developer licenses available for testing and development purposes
<b>Support</b>	Basic support for technical inquiries is included for the first 2 years after purchase, Important bug fixes are available in the latest software version. Contact: <a href="mailto:support@unified-e.com">support@unified-e.com</a>
<b>License Agreement</b>	<a href="https://unified-e.com/de/licenseagreement.html">https://unified-e.com/de/licenseagreement.html</a>
<b>License Key Registration</b>	The license key will be provided via email after purchase through a distributor. Please follow the instructions in the email to register and activate the license for a specific gateway PC